



# Wagga Iron

## OPEN FIREPLACES & FIRE BOWLS & Fire Dogs: - CATALOGUE

### Fire baskets for logs

Years ago we saw a burning log rolling from the fireplace across the white carpet.

So we designed fire baskets as seen in the picture. In practice they look right, and never have we known of a log rolling out of them. This should not happen unless the logs are piled high above the top of the front grate.

The arms at the sides are for supporting the basket on firedogs. Initially we supported the arms on brick hearths as seen in the picture. The baskets can be cut to suit fireplaces too small for a full-sized fire basket.

The U-shaped baskets were designed to keep the fire away from the back wall. L-shaped baskets can contain a bigger spread of logs. Usually they are used in conjunction with firebacks.



**Black is beautiful  
except  
when burning logs roll onto carpets**

### Built-in fire grates

These are L-shaped to form front and bottom grates in one casting, the ends of which are grouted into the brick fireplaces. Then the expense of complete cast iron fireplaces is avoided. They used to be standard for small fireplaces.

### Complete cast iron fireplaces

They are ornamental small hearths complete with front and bottom grates, flue opening and surrounding plates. They are designed to fill the fireplace openings.

### Open hearth fireplaces

These are assembled to form hearths complete with front and bottom grates. The ash-trays are with cast iron fronts and steel trays.

Normally they are freestanding on fireplace hearths.



**U- shaped  
fire basket**



**L- shaped  
fire basket**



**built-in  
fire grate**



**complete  
fireplace**



**Metters Open hearth  
fireplace**



**Large U-shaped  
firebasket**

**Fireplace - Weights and Dimensions**

<u>Castings</u>	<u>Weights</u>	<u>Dimensions</u>	
U-Shaped fire baskets	22 kg	755 x 370 x 170 mm high overall	(front grate 750 mm wide)
L- " " "	22 "	750 x 405 x " " " "	( " " " " " )
Built-in fire grates	11 "	420 x 220 mm high overall	
Complete fireplace	58 "	955 x 950 " " "	
Metters Open hearth fireplace	52 "	735 x 420 x 475 mm high overall	
Large U shaped Fire basket	65 "	920 x 460 x 280 mm high overall	
Large L shaped Fire basket	60 "	920 x 430 x 280 mm high overall	

**Fire Bowls – Wts & Dimensions**

<u>Castings</u>	<u>Weights</u>	<u>Dimensions</u>
Deep Fire Bowl	73 kg	800mm dia x 440 mm H
Shallow Fire Bowl	45 kg	780mm dia x 200 mm H



**Firebacks**

These are shown in a separate catalogue.

**Maintenance and care**

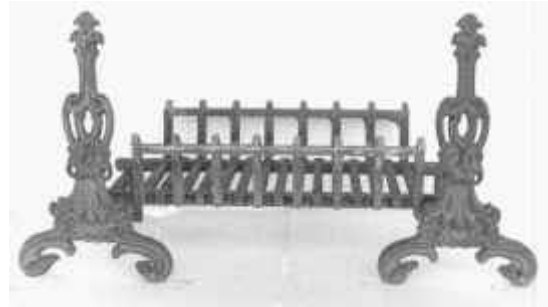
Our fireplace castings have a high content of phosphorus to give greater resistance against distortion by heat. Without access to air, cast iron is susceptible to distortion and rotting. It is far less liable to be distorted by heat than is mild steel.

All our fire grates are designed with the slots having a bottom opening larger than that at the top, so that ash will drop clear rather than choke the slots.

In order to keep the grates in good order it is essential that grates are cleaned to remove accumulated ash. However some prefer the ash in the baskets to remain after the fire has died down, in order to give warmth in the morning.

This will cause the base of the basket to be rotted away. When this happens a practice is to lay a cheaper gully grate over the hole in the bottom of the fire basket.

## **FIRE DOGS**



**Firedogs supporting fire baskets**

### **Firedogs**

For centuries firedogs have been used to support the ends of burning logs on hearths of fireplaces. Logs tended to roll out from the centres of the fireplaces. To prevent this from happening, cast iron fire baskets were used.

These have front grates which keep logs within the baskets.

If there is no circulation of air around the bottom grates of the baskets, the heat of the fire causes the cast iron to warp and 'rot'. Accumulation of ash prevents this required movement of air.

The ash falling through the bottom grates of the baskets can be collected in a central recess in the hearth.

If there is no recess, mounting the baskets on firedogs will provide room for ash pans to be placed under the baskets, as seen in the above pictures.



**Fleu-de-lys**



**Regency**



**Methuselah**



**Torch**

---

## **THE WAGGA IRON FOUNDRY PTY LTD**

ABN29 102 548 309

220 - 224 Hammond Avenue, Wagga  
P.O. Box 374, Wagga Wagga, 2650  
Tel. 02 - 69213387 Fax. 02 - 69211572

Email. [sales@ironfoundry.com.au](mailto:sales@ironfoundry.com.au)  
Website: [www.ironfoundry.com.au](http://www.ironfoundry.com.au)