



# Wagga Iron

## LAMP POST CATALOGUE

### *Create your own Lamp Post using the Proforma*

The Wagga Iron Foundry now offers you the ability to create your own personalised design from our extensive range of pattern elements. These include a range of Shafts, Bases and with decorative Decals.

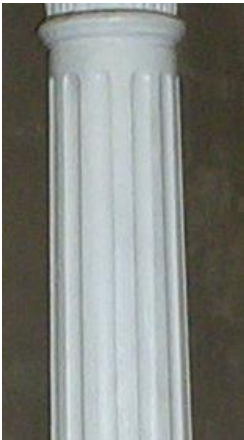
Over the years The Wagga Iron Foundry has been involved in Heritage restoration projects involving the manufacture of pattern reproductions to match existing plans or existing items. If you have to reproduce any exclusive pattern work we will consult with you regarding our ability to supply.

Please note:

- All Lamp Post Shafts whether plain or fluted are tapered
- All pattern work for a cast iron lamp post is prepared on a pattern board as to the length measurements specified by the Customer / Builder / Architect.
- All components are cast in one operation; however the Ladder rack is a separate item.
- The ladder rack is an option if required.
- Custom designs for bases are available if an original is supplied in order that a pattern can be created at the customer's expense.
- Medium Lamp Posts are made cored, ie hollow with a wall thickness of 15 mm
- The base can be fixed internally using a concealed collared base plates or external lugs. Note an additional hole would need to be drilled through the base for the wiring.
- A door can be made in the base for access to the junction box if required. Many electricians now locate the junction box / switching external to the lamp post with longer cabling.
- Wagga Iron can source and supply Light fittings.
- Ladder rack core size 50mm dia, external dia 110 mm.

**OPTIONS:**

**SHAFT**



**Fluted Medium Shaft**

Base Dia.	Top Dia.	Max Length
125 mm	110 mm	2750 mm
Profile - 12 wide flutes		



**Plain Medium shaft**

Base Dia	Top Dia	Max Length
125 mm	110 mm	2750 mm



**Plain Shaft Option 1**  
**Grapevine** Single twist  
Max length 1500mm &  
requires a long medium  
base option.



**Ladder rack** option fits  
a Medium shaft only  
Total length 830 mm

**BASES: Long bases**



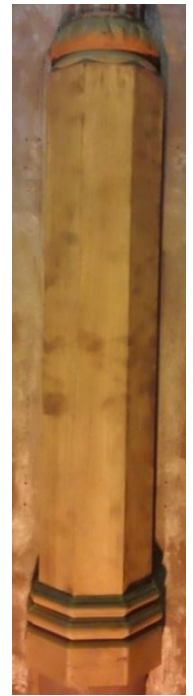
**12A**



**14A**



**17A**



**21A**

<u>Design</u>	<u>Shaft Size</u>	<u>Shaft Design</u>		<u>Dia mm</u>	<u>Base Width</u>	<u>Overall Height</u>	<u>Form</u>	<u>Notes</u>
		<u>Plain /</u>	<u>Fluted</u>					
12A	Med	Plain /	Fluted	125	225	1070	Long	WIF Long Base / Bal Knot
14A	Med	Plain /	Fluted	125	210	1120	Long	WIF Light Pole base
17A	Med	Plain /	Fluted	127	210	1155	Long	WIF Junee Lamp Post base
21A	Med	Plain /	Fluted	125	215	1100	Long	WIF Long base Decor ring
10A	Med	Plain /	Fluted	125	200	250	Short	Not suitable for Junction box door
18A	Med	Plain /	Fluted	127	190	370	Short	Not suitable for Junction box door

**Short bases**



**10A**



**18A**

**Photo Collection:**



Lamp post with ladder  
Rack using a Medium  
Fluted shaft and Base 12A



Junee Lamp post  
Pattern using 17A base  
and Junee tapered Fluted  
shaft



Ladder rack pattern