



Cast Iron Picket Heads – Catalogue

The range of Picket heads available at the Wagga Iron Foundry will provide the final touch to your Heritage fence. We list approximate dimensions and weights and have the capacity to cast to your design from a sample supplied.

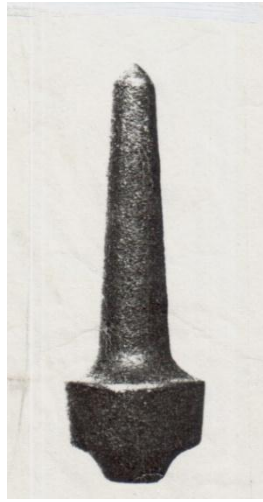
The cored hole diameters listed are the preferred sizes. They may be altered to suit other sized railing upright rods over which the picket heads are to be slipped, provided that there is sufficient metal thickness between the necks of the picket heads and the holes.

Picket Heads

<u>Ref No</u>	<u>Width</u> mm	<u>Height</u> mm	<u>Weight</u> kg	<u>Hole</u> <u>Dia:</u> mm	<u>Note</u>	<u>Matches</u>	<u>No. on</u> <u>pattern</u>
1	50	200	1	16			6
2	60	180	1	20			4
2	60	180	1	16			2
3	75	185	1.6	20			3
4	110	160	0.8	20			4
5	85	180	0.6	20			3
6	70	140	0.4	12		matches 5	3
7	105	140	0.6	16			6
8	65	100	0.4	16		matches 7	8
9	75	175	0.75	20			4
10	65	160	0.6	18		matches 9	6
11	90	155	0.4	12			6
12	60	115	0.2	12		matches 11	8
13	85	140	0.6	Solid			8
14	70	200	1	18			5
15	60	105	1	18		matches 14	8
16	130	185		25	Squ core		2
17	60	160	0.7	Solid			4
18	70	240	2	16			3
19	125	165	0.55	Solid			4
20	55	190	0.65	Solid			4
21	85	170	0.72	16			Job 2
22	57	115	0.33	16		matches 21	6
23	75	145	0.22	15	spigot		Job 3
24	75	165	0.35	18	Spigot		Job 2
25	65	142	0.24	16	Spigot	matches 24	Job 2



1



2



3



4



5



6



7



8



9



10



11



12



13



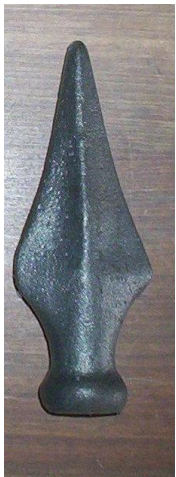
14



15



16



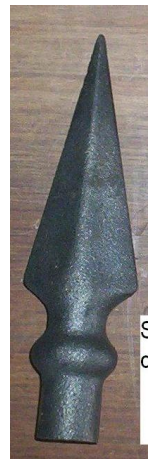
17



18



19



20



21



22



23



24



25