



Wagga Iron

LAMP POST CATALOGUE

Create your own Lamp Post using the Proforma

The Wagga Iron Foundry now offers you the ability to create your own personalised design from our extensive range of pattern elements. These include a range of Shafts, Bases and with decorative Decals.

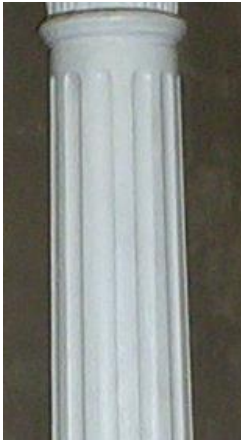
Over the years The Wagga Iron Foundry has been involved in Heritage restoration projects involving the manufacture of pattern reproductions to match existing plans or existing items. If you have to reproduce any exclusive pattern work we will consult with you regarding our ability to supply.

Please note:

- All Lamp Post Shafts whether plain or fluted are tapered
- All pattern work for a cast iron lamp post is prepared on a pattern board as to the length measurements specified by the Customer / Builder / Architect.
- All components are cast in one operation; however the Ladder rack is a separate item.
- The ladder rack is an option if required.
- Custom designs for bases are available if an original is supplied in order that a pattern can be created at the customer's expense.
- Medium Lamp Posts are made cored, ie hollow with a wall thickness of 15 mm
- The base can be fixed internally using a concealed collared base plates or external lugs. Note an additional hole would need to be drilled through the base for the wiring.
- A door can be made in the base for access to the junction box if required. Many electricians now locate the junction box / switching external to the lamp post with longer cabling.
- Wagga Iron does not supply the Light fittings however we do need to know the size of the bayonet fittings on the Lamp so that the fittings on the post will match.
- Ladder rack core size 50mm dia, external dia 110 mm.

OPTIONS:

SHAFT



Fluted Medium Shaft

| Base Dia. | Top Dia. | Max Length |
|--------------------------|----------|------------|
| 125 mm | 110 mm | 2750 mm |
| Profile - 12 wide flutes | | |



Plain Medium shaft

| Base Dia | Top Dia | Max Length |
|----------|---------|------------|
| 125 mm | 110 mm | 2750 mm |



Plain Shaft Option 1
Grapevine Single twist
Max length 1500mm &
requires a long medium
base option.



Ladder rack option fits
a Medium shaft only
Total length 830 mm

BASES: Long bases



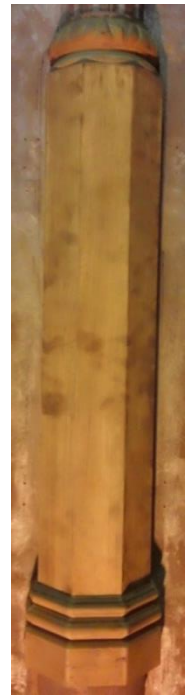
12A



14A



17A



21A

| <u>Design</u> | <u>Shaft Size</u> | <u>Shaft Design Plain / Fluted</u> | <u>Dia mm</u> | <u>Base Width</u> | <u>Overall Height</u> | <u>Form</u> | <u>Notes</u> |
|----------------------|--------------------------|---|----------------------|--------------------------|------------------------------|--------------------|------------------------------------|
| 12A | Med | Plain / Fluted | 125 | 225 | 1070 | Long | WIF Long Base / Bal Knot |
| 14A | Med | Plain / Fluted | 125 | 210 | 1120 | Long | WIF Light Pole base |
| 17A | Med | Plain / Fluted | 127 | 210 | 1155 | Long | WIF Junee Lamp Post base |
| 21A | Med | Plain / Fluted | 125 | 215 | 1100 | Long | WIF Long base Decor ring |
| 10A | Med | Plain / Fluted | 125 | 200 | 250 | Short | Not suitable for Junction box door |
| 18A | Med | Plain / Fluted | 127 | 190 | 370 | Short | Not suitable for Junction box door |

Short bases



10A



18A

Photo Collection:



Lamp post with ladder
Rack using a Medium
Fluted shaft and Base 12A



Junee Lamp post
Pattern using 17A base
and Junee tapered Fluted
shaft



Ladder rack pattern